

ASDC Conference June 2018

Michelle Tanner

Associate Superintendent of the Deaf

Joel Coleman

Superintendent of USDB



**UTAH SCHOOL
FOR THE DEAF**

USDB

- USDB has a rich 134 year heritage, pre-dating statehood
- Unique among state school systems, providing comprehensive services in a variety of educational settings and placements from birth through age 21



AUTHORITY

- **53E-8-201. Utah Schools for the Deaf and the Blind**
- Designated as a public school agency that provides services through:
 - Utah Schools for the Deaf
 - Utah School for the Blind
 - Programs for student who are deaf blind
 - The Parent Infant Program
- The Utah State Board of Education serves as the school board for the Utah Schools for the Deaf and the Blind (USDB) and the Utah Legislature is the primary source of operational funding for USDB.



ELIGIBILITY

- Resident of Utah younger than 22 years of age
- Referred USDB by a school district or a local EI program
- Identified as deaf, blind, or deafblind through SpEd or 504 eligibility process



RECENT UPDATES

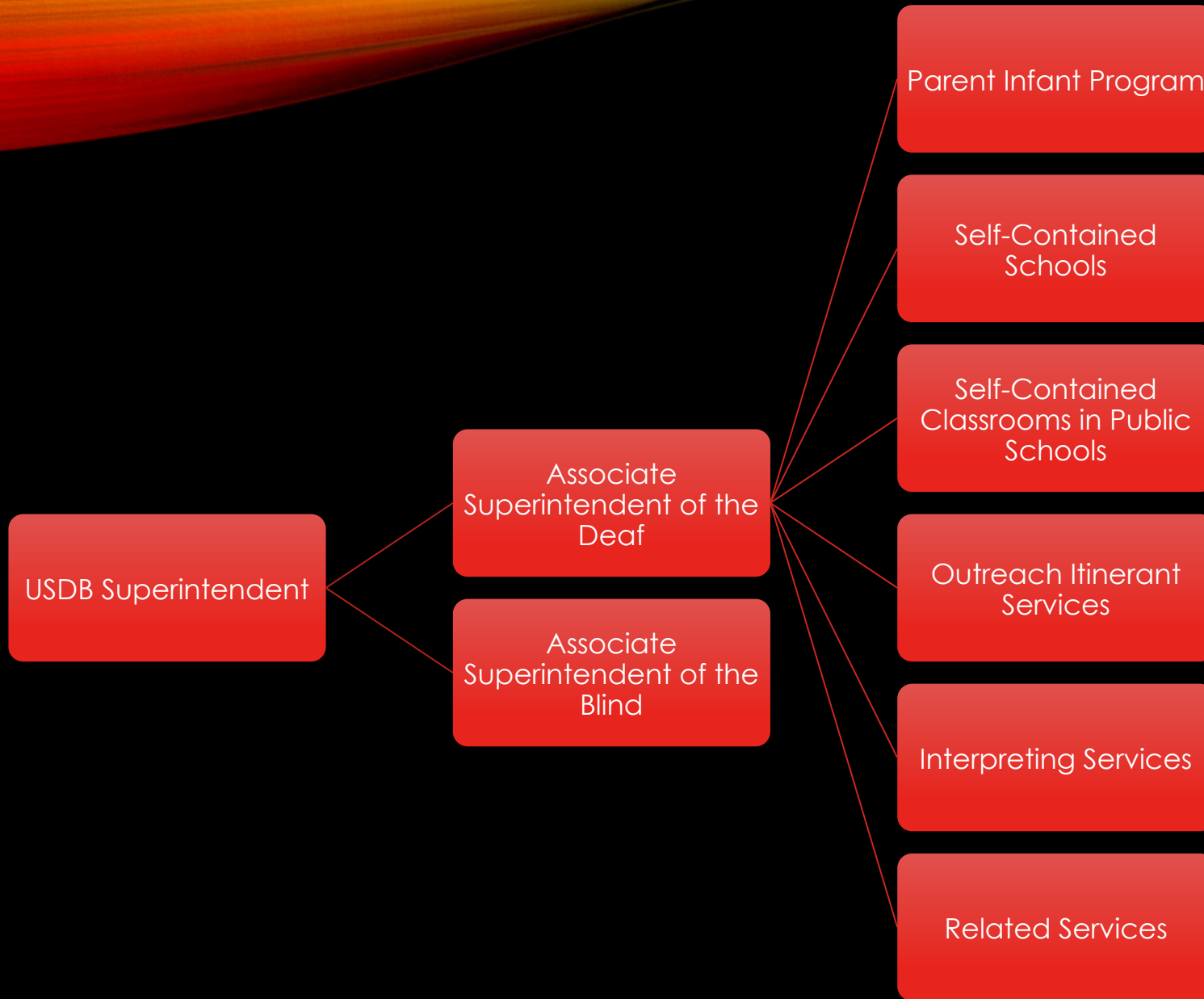
- Students may now transfer directly from other state schools for the deaf
- Health care providers are required to report children they suspect of having a hearing loss to USDB.



COLLABORATION

The Utah Schools for the Deaf and the Blind shall collaborate with the Department of Health...

STRUCTURE





USD STAFFING PATTERNS 2018-19:

PIP Advisors: 15

Auditory Habilitationists: 4

Deaf Mentors: 8

Outreach Teachers: 18

ASL/English classroom teachers: 33

Audiologists: 6

ASL Specialists: 5

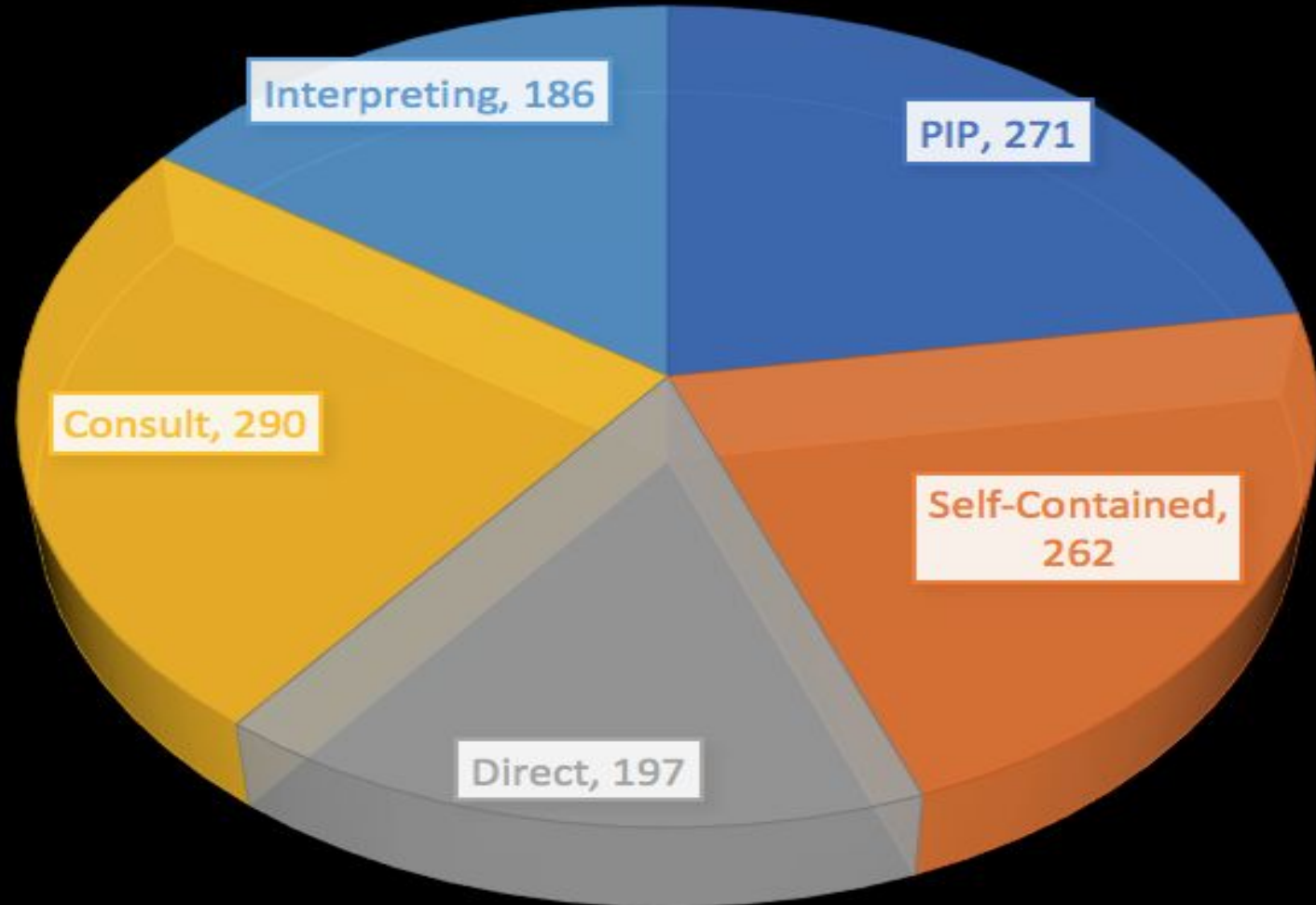
Speech language pathologists: 5

LSL classroom teachers: 16

Speech language technicians: 2

Interpreters: 50

USD 2017-18 ENROLLMENT



Audiology
Referrals: 271

CURRENT USD LOCATIONS

Ogden Area

KBS
(Campus PreK – PH)= 50

Outreach = 14

LSL (PreK-2nd)= 5

Salt Lake Area

JMS
Campus (PreK-PH)= 106

Outreach = 105

LSL (PreK-2nd)= 63

Utah County (South)

Orem/Springville
Campus (PreK-12th)= 40

Outreach = 238

PIP - Statewide

Approximately 270

Interpreting Services

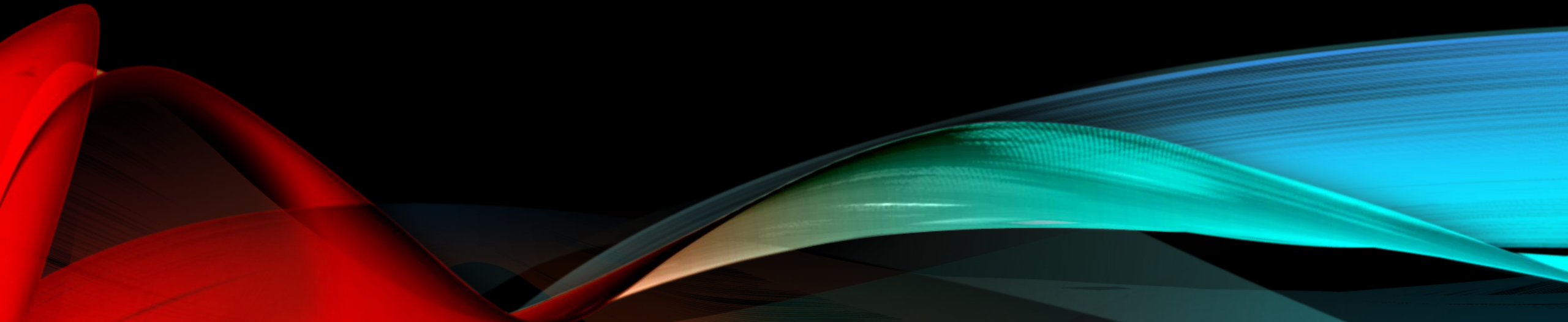
Salt Lake area = 151

Ogden area = 17

Southern Districts = 18

FACILITIES UPDATES

JUNE 2018

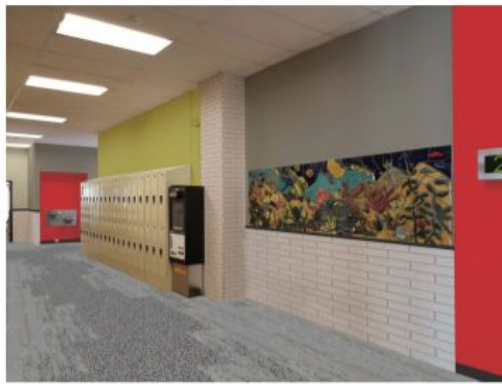




OGDEN



A1 Lobby View



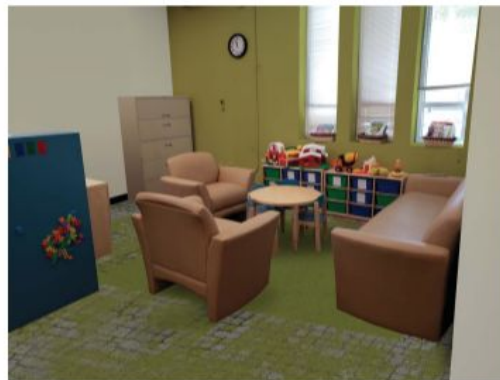
A2 South Hallway View



A3 Student Center View



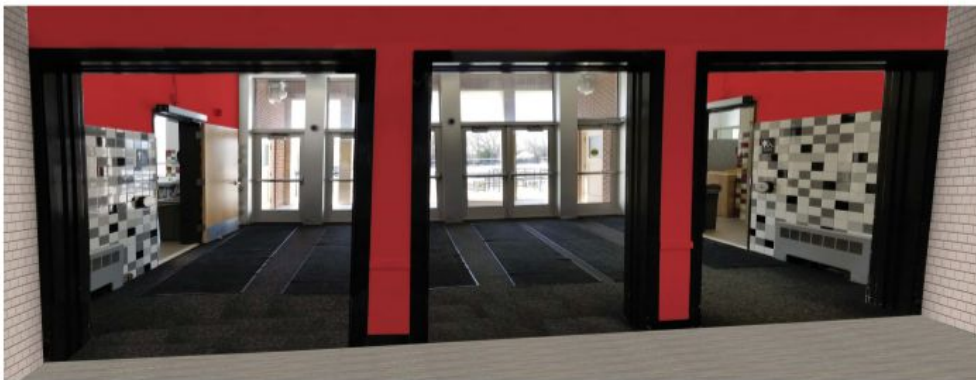
B1 Audiology Booth View



B2 Audiology Center View



B3 North East Hallway View



JMS

JMS



OEC







SPRINGVILLE





USD INNOVATIONS

Dual Language Immersion

Personalized, competency based education

1:1 devices for all students

Online blended learning courses

Maker spaces

Project based learning

Outdoor family learning center

Enrichment summer camps

Distance interpreting

Rural family internet

Deaf Entrepreneurship Initiative

Real world learning

Accessible study abroad

MOVING FORWARD AT USD

League of Innovative Schools

- October 10th - 12th
- 85 Districts from across the U.S.
- USDB only Deaf School

Improving Transition Services

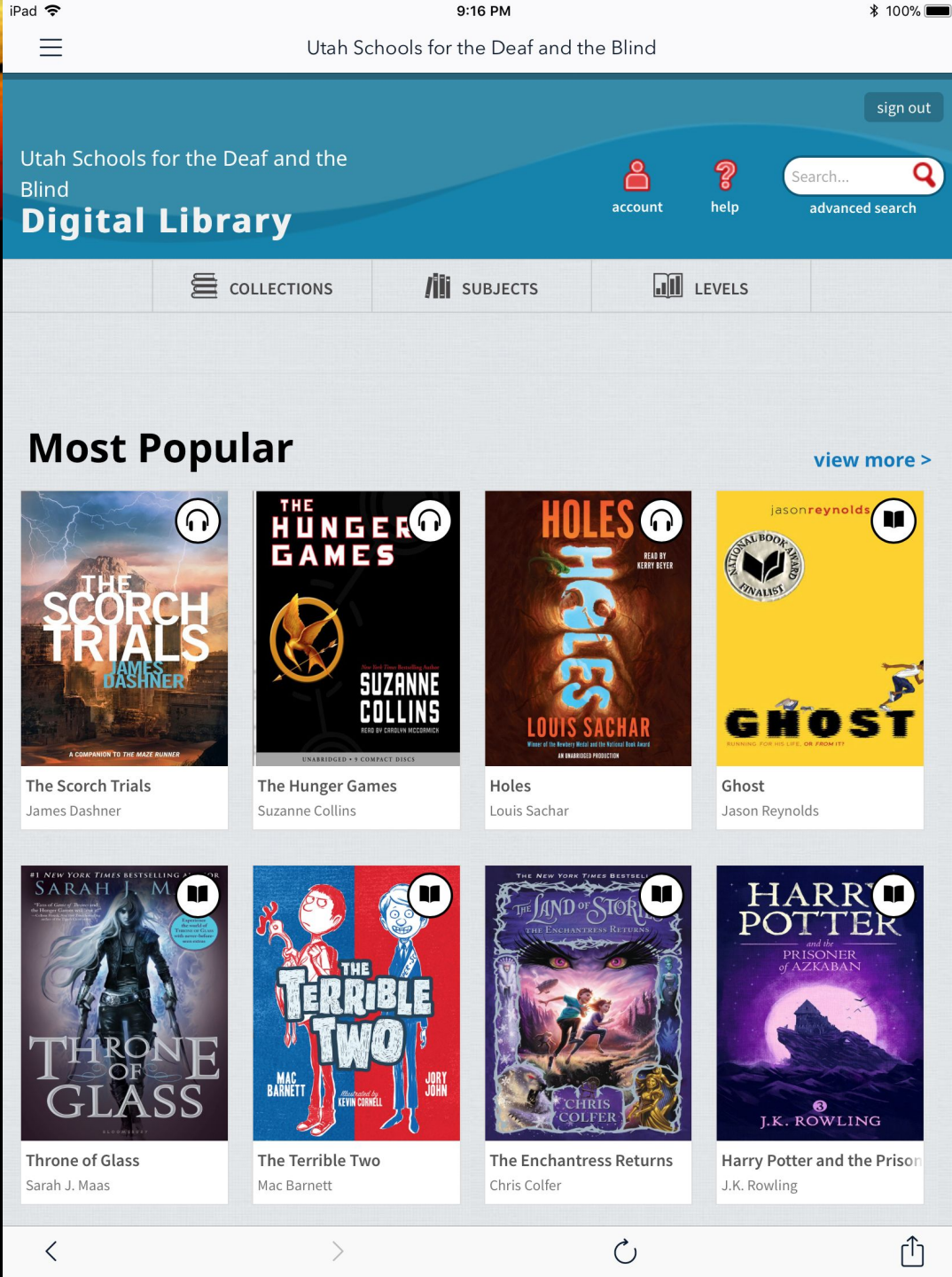
- New Transition Specialist
- Transition committee

Raising expectations at USD

- Tracking data closely
- ASLPI Expectations for staff

Digital Tools

- Canvas, [GoReact](#), [Benchmark Universe](#), [BrainPOP](#), Overdrive



OVERDRIVE

QUESTIONS?

