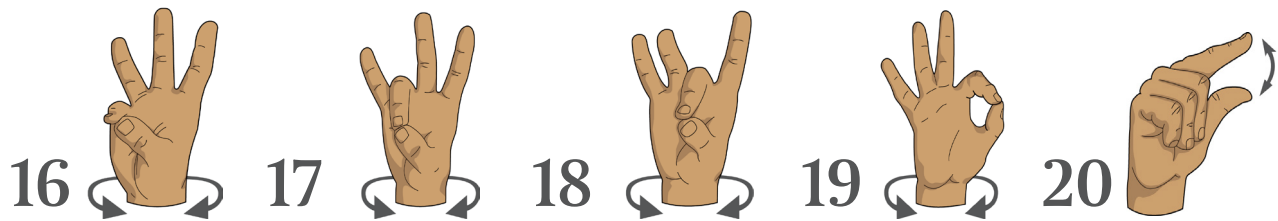
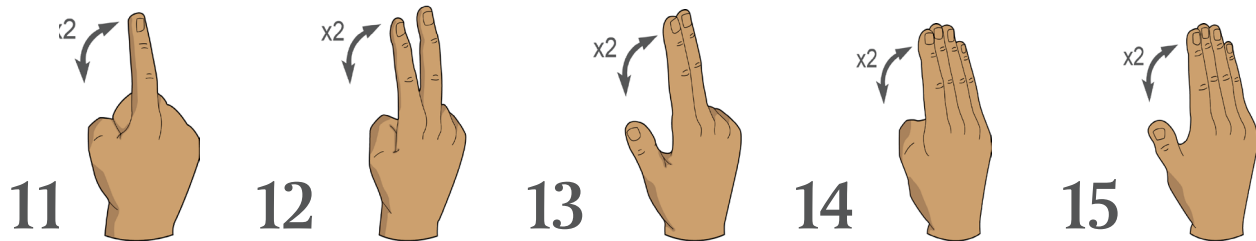
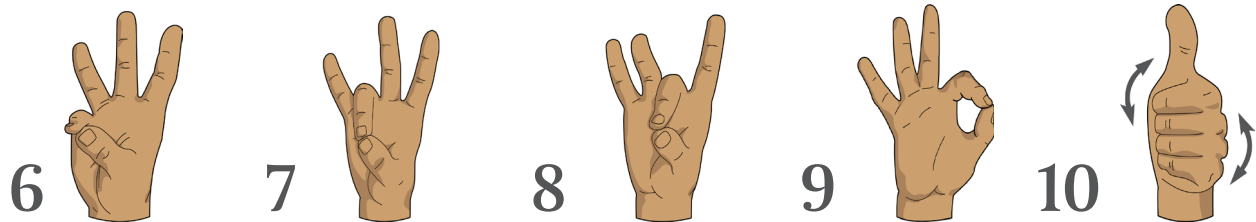
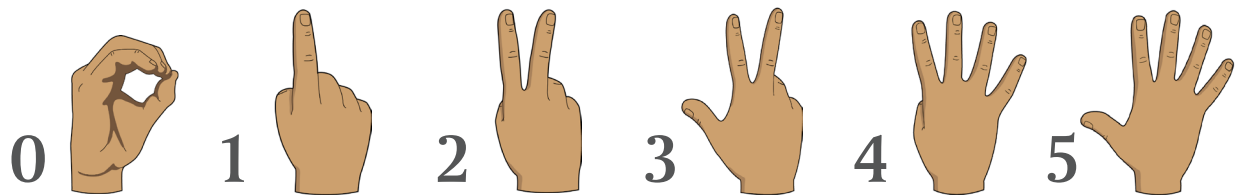


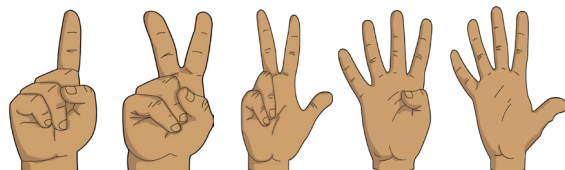


ASL Numbers

Find more ASL resources at www.deafchildren.org



Note For the numbers 1-5, it's best practice to sign them with your palm facing your body. However, it's acceptable to sign 1-5 with your palm facing forward (as shown here) if you're emphasizing the number, signing a two-digit number such as 64, or if you're signing a series of numbers such as a phone number time, date, or age.



American Society for Deaf Children

PO Box 23, Woodbine, MD 21797 • 1-800-942-2732 • www.deafchildren.org